

SURPLUS EQUIPMENT FROM A STATE-OF-THE-ART GEAR MANUFACTURER INCLUDING  
2010 ZEISS BRIDGE TYPE CMM, 2012 YOU JI CNC VBM, CNC VERTICAL GRINDER,  
(5) BRIDGE CRANES TO 25 TON, (4) JIB CRANES TO 5 TON, TOOLING,  
INSPECTION & LAB EQUIPMENT 2000 KVA TRANSFORMER, ROLLING STOCK, & SHOP EQUIP

**BidSpotter.com**  
To Become a Qualified Bidder on the Internet  
See Instructions on Page 3

# PUBLIC AUCTION

Plant Closed

## GEAR SYSTEMS USA, INC.

2400 N. Priority Way Street – Yorktown, Indiana 47396

55 Miles Northeast of Indianapolis, IN

**SALE DATE: TUESDAY, JANUARY 21ST AT 9:00 AM**

**INSPECTION: MONDAY, JANUARY 20TH, FROM 10:00 AM TO 4:00 PM**  
or by appointment with [joe@cia-auction.com](mailto:joe@cia-auction.com)



(6) 60' Span Wolverine Double and Single Girder Bridge Cranes Up To 25 Ton



Zeiss Model MMZ C 30 40 30 CNC Gantry-Type Coordinate Measuring Machine



49" You Ji Model YV-1200ATC+C CNC Vertical Boring Mill w/Live Tooling



**REAL ESTATE TO BE OFFERED  
AT PUBLIC AUCTION**

**ONSITE ONLY AT 11:00 AM**

127,835 Sq. Ft. Tilt-Up Concrete Wall Heavy  
Manufacturing Industrial Building on  
16.33 Acres Built in 2011



Sale Under The Management Of

**CINCINNATI INDUSTRIAL AUCTIONEERS**

auctioneers | appraisers | since 1961 | [cia-auction.com](http://cia-auction.com) | [info@cia-auction.com](mailto:info@cia-auction.com)

2020 Dunlap St., Cincinnati, Ohio 45214 Phone 513-241-9701 Fax 513-241-6760



# TUESDAY, JANUARY 21ST - 9:00 AM



**NEW 2010**

Berthiez Model RVU 900/80 ID, OD, Turning, 51" Max Dia, Vertical CNC Grinder



**NEW 2012**

**63" Swing**

49" / 63" You Ji Model YV-1200ATC+C CNC Vertical Boring Mill w/20 HP Live Tooling



DCM Model MPI 4830B Magnetic Particle Tester



8" DCM Model Mini Punch and Die Grinder



DCM Model VIO 20/100 Linear Tool Presetter



Stresstech Model Rollscan 300 Digital Barkhausen Noise Analyzer



Ambrell Model Ekoheat 50/10 ES Digital Bearing Heater Controller w/ Ambrell 301-0353.A Bearing Heater & Koolant Coolers HCV 3000 Chiller



Tesa Model TPS 1500 Motorized Setting Bench w/Stand

### CMM

Zeiss Model MMZ G 30 40 30 CNC Gantry-Type Coordinate Measuring Machine; S/N 152024, 118.1" X-Axis, 157.5" Y-Axis, 118.1" Z-Axis, 48" X 48" X 18" High Work Table, Zeiss and Renishaw Probe Accessories, PC-DMIS, Gear Pro Software (New 2010)

### CNC VERTICAL BORING MILL

49"/63" You Ji Model YV-1200ATC+C CNC Vertical Boring Mill w/20 HP Live Tooling; S/N 1YVX120T02973, Fanuc Series 0i-TD Control, 49" Table, 63" Max Swing, 350 RPM Table Spindle, 16-Position ATC, 2400 RPM Live Spindle, 20 HP Live Spindle, 50 Taper, 1,000 PSI Coolant Thru Spindle, Renishaw MP-10 Probe, Auto Tool Presetter, Approx 2,000 Cutting Hours, (New 2012)  
(2) 39" Three-Jaw Chucks

### CNC VERTICAL GRINDER

Berthiez Model RVU 900/80 ID, OD, w/ Turning Vertical CNC Grinder; S/N 4219, 840D Siemens Control, 31" Dia. Chuck, 35.4" Dia. Max Swing, 150 RPM Table Spindle Speeds, 61" X-Axis, 31" Z-Axis, (3) Station Main Turret has (2) Grinding Spindles, Spindle No. 2: 11.8" Dia. Max Grinding Wheel, 3.9" Max. Grinding Wheel Thickness, 8,000 RPM, Spindle No. 3: 15.7" Dia. Max Grinding Wheel, 5,000 RPM, Coolant System w/ Paper Filter (New 2010)

### TOOLING

Large Quantity of Tooling for Gleason 800-2400 Gear Hobbers, Shapers, Grinders & Accessories Consisting of; Banyan Indexable Gear

Milling Cutters, Gleason Indexable Duplex Hobs, Gleason Tooling, Chuck Jaws, Wintnerth Wendt Grinding Wheels, Norton Grinding Wheels & Related

### TOOL PRESETTER

DMG Model VIO 20/100 Linear Tool Presetter; S/N 99560001018, 8.3" X-Axis, 39.4" Z-Axis (New 2010)

### MAGNETIC PARTICLE TESTER

DCM Model MPI 4830B Magnetic Particle Tester; S/N 38251, 42" Coil Travel, 30" Dia. Coil, 10,000 Ampere Turn, 800 Lb Capacity

### ROTARY GRINDER

8" DCM Model Mini Punch and Die Grinder; S/N 12111, 8" Three-Jaw Chuck, 6" Grinding Wheel, 5" Magnetic Chuck

### INSPECTION

Tesa Model TPS 1500 Motorized Setting Bench w/Stand; S/N 4Y001, Model No. S2014001  
Stresstech Model Rollscan 300 Digital Barkhausen Noise Analyzer; S/N 120752  
Techno Mark Model Multi-4-V2 Pin Stamp Marking Machine; S/N 1123029 (New 2011)

Plarad Torque & Tensioning System w/ (6) Plarad Attachment Kits  
GE Model XL Go Video Probe Remote Visual Inspection Camera

6' X 11' X 18" Thick Drilled and Tapped Granite Surface Plate  
40" Mitutoyo Digital Caliper, (2)  
24" Mitutoyo Digital Calipers, (10)

### Various Digital Calipers

(10) Mitutoyo Digital Disc Micrometers up to 10"

(13) Mitutoyo Digital Micrometers up to 28"

Steinmeyer FMS 175mm Indicating Span Micrometer

Hottinger Baldwin Messtechnik MVD255-115V Panel Mounting Amplifier

### Large Quantity of Inspection

Including; Mahr Bar Mic's, Digital Height Gauges, Fowler Digital Gear Tooth Caliper, Sturtevant Richmond Torque Meters, Phase II PHT-1800 Hardness Tester, Mitutoyo Dial Bore Gauges, Digital Depth Gauges, Gage Block Sets, Digital & Dial Indicators, Torque Wrenches, Magnetic Stands and Related

### LAB EQUIPMENT

Belec Type BCPO Compact Port HLC Portable Hybrid Metal Analysis Spectrometer; S/N 110608  
Struers Model Labopol-25 Lapping Machine

Leco PR-25 Mounting Press

Leco LM 100AT Microindentation Hardness Tester

Olympus BX51RF Microscope

Super Systems CAT-100

Atmospheric Carbon Potential Analyzer

### BEARING HEATER & INDUCTION HEATER

Ambrell Model Ekoheat 50/10 ES Digital Bearing Heater Controller w/ Ambrell 301-0353.A Bearing Heater

### & Koolant Coolers HCV 3000 Chiller

TM Model Easytherm 60 HQ. V480 Induction Heater; S/N 10270179, 480 Volt, 25 KVA

### BRIDGE CRANES

(2) 25 Ton X 60' Span Wolverine Crane Double Girder Bridge Cranes; Remote & Pendant Controlled

20 Ton X 60' Span Wolverine Crane Double Girder Bridge Crane; Remote & Pendant Controlled

(3) 10 Ton X 60' Span Wolverine Crane Single Girder Bridge Cranes; Remote & Pendant Controlled

55 Ton X 25' Span Wolverine Crane Spreader Bar

20,000 Lb. Massload Technologies ML-HCS Digital Crane Hook Scale  
5,000 Lb. Mag-Mate PNL5000 Lifting Magnet

Large Quantity of Lifting Equipment Including; Clevises, Slings, Chain Falls, Eyebolts, Come-a-Longs and Related

### JIB CRANES

5 Ton X 18' Arm Gorbel 360-Degree Floor Mounted Motorized Rotation Jib Crane; w/ 5 Ton R & M Loadmate Hoist, 15' Under Arm

(4) 5 Ton & 3 Ton X 18' Arm Gorbel 360-Degree Floor Mounted Motorized Jib Cranes; w/ 3 Ton R & M Loadmate Hoist, 16' Under Arm

### COOLING TOWER

BAC Model FXV-0812B-36T Cooling Tower



Large Quantity of Gleason Opti Cut, Banyan, Cutter Bodies, Hobs, Shaper Cutters, Arbors, Carbide & More

## REAL ESTATE TO BE OFFERED AT PUBLIC AUCTION - ONSITE ONLY AT 11:00 AM



**127,835 Sq. Ft. Tilt-Up Concrete Wall Heavy Manufacturing Industrial Building on 16.33 Acres Built in 2011;** 24,000 Sq. Ft. Office Area, 108,900 Sq. Ft. Manufacturing Area, (2) Dock Doors, (5) Drive-In Doors, 23' Under Crane Beams, 33' Under Roof Beams, 18" Slab Floor w/ Sealed Joints, Rail Spur Adjacent Site, Heavy Electrical, 1/2 Mile to I-69, Expandable by 108,900 Sq. Ft. with Adjacent Site, (150) Car Parking Spaces, Full Concrete Parking and Truck Court, Rooftop Heating & Ventilation Units, 3,000 Sq. Ft. Fully Air-Conditioned Quality Control Room Including Air-Bag System Insulated Slab, Limited Industrial Zoning, Wet Sprinkler System, 65' X 30' Column Spacing, T-5 Lighting, 480 Volt Wiring in Facility, City Water & Electric

*Subject to Confirmation by Owner -  
Subject to Prior Sale - Subject To Withdraw -  
Transaction to be Closed by an Indiana  
Attorney of Law*

**Real Estate Terms of Sale:** To Be Offered Live Onsite only, Buyers will need \$50,000.00 Down in Cash or Certified Funds sale day. A 6% Buyers Premium will be added to the high bid to determine contract price. High bidder will be required to sign a "Contract to Purchase" for the amount at the sale's conclusion. Owner will have 48 hours to accept, or reject high bid. If accepted the balance will be due at closing within 60 days of auction. If the bid is not accepted buyer's deposit will be refunded promptly. Call for complete terms and information package.



**NEW  
2010**

Zeiss Model MMZ G 30 40 30 CNC Gantry-Type Coordinate Measuring Machine



(4) Gorbel Free-Standing Jib Cranes



**NEW  
2011**

2000/2667 KVA Eaton Dry Type Distribution Transformer



Leico LM 100AT Microindentation Hardness Tester



Belec Type BCPO Compact Port HLC Portable Hybrid Metal Analysis Spectrometer



(3) 10 Ton X 60' Span Wolverine Crane Single Girder Bridge Cranes

## ELECTRICAL TRANSFORMER

2000/2667 KVA Eaton Dry Type Distribution Transformer; S/N 11UBDS90716001, 12,470 High Voltage, 110HV/60LV kV BIL, 3,300V/1905 Low Voltage, 450/467 LV Amp, AAFA Class, 3 Phase, 60 Hertz, (New 2011) \*\*Subject to Withdraw - Call Before Auction\*\*

## AIR COMPRESSORS

100 HP Ingersoll Rand Model IRN100H-CC Air Compressor; S/N NV8879U10269, 145 PSIG (New 2010)  
50 HP Ingersoll Rand Model UP6-50 Air Compressor; S/N PG2506U06128, 125 PSIG  
(2) Ingersoll Rand Air Dryers  
Ingersoll Rand Model D8501NA400 Refrigerated Air Dryer; S/N 487924  
Ingersoll Rand Model NVC3000A4H0 Refrigerated Air Dryer; S/N 281395

## LIFT TRUCK

11,000 Lb. Caterpillar Model GC55K LP Gas Lift Truck; S/N AT88A00314, 84" Mast Height, 172" Lift Height, 3-Stage Mast, Side Shift, 60" Forks, 16,259 Hours Showing  
9,000 Lb. Linde Model RX60-50 Non-Marking Tire Electric Lift Truck; S/N 516329B00277, 80 Volt Battery, 182" Lift Height, Cascade Fork Positioning, 1,559 Hours Showing, Two-Stage Mast  
7,000 Lb. Hyster Model S70 LP Gas Lift Truck; S/N G187V02112M, 80" Mast Height, 122" Max Lift Height, 2-Stage Mast, 42" Forks, Fingertip Controls, 12,603 Hours Showing  
**PALLET TRUCK**  
8,000 Lb. Linde Model EW80-02 Electric Walk Behind Pallet Truck; S/N 2693-0675

## BOOM LIFT

40' JLG Model N40 Electric Boom Lift; S/N 33882, 500 Lb Capacity, 503 Hours Showing (Mfg Year 1998)

## FLOOR SCRUBBER

Tennant Model T15 Electric Ride-On Floor Scrubber; S/N 16568, 36 Volt

## VEHICLE

2010 Dodge Caravan SE Minivan; VIN#2D4RN4DE3AR380046, 89,156 Approx. Miles

## SHOP EQUIPMENT

(9) 2 Cu. Yard Galbreath Portable Dump Hoppers  
3,000 Lb Lift Products RTMX-30 Hydraulic Scissor Lift Table  
(8) Lista Tooling Cabinets  
(6) Lista Tooling Cabinets w/ Maple Top Workbench

6" Belt/12" Disc Jet Combo Sander  
14" Kalamazoo Abrasive Cutoff Saw

Wendevorrichtung Motorized Trunion System

Shop Equipment Consisting of; Pallet Racking, Electric & Pneumatic Hand Tools, Pallet Trucks, Digital Platform Scale, Shop Vacs, Workbenches, Fans, Carts, Banding Carts, Fireproof Cabinets

## OFFICE EQUIPMENT

Late Model Office Equipment Including; Conference Room w/ Chairs, Polycom Video Conferencing System, 3-Person Work Stations, Lateral File Cabinets, Lockers, Computers, Printers, Copiers, Server Racks



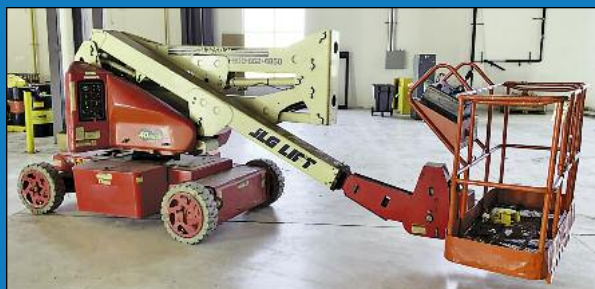
55 Ton X 25' Span Wolverine Crane Spreader Bar

## WEBCAST BIDDER INSTRUCTIONS

- **Bidders in the United States** will receive approval forms from our office upon registering for the auction on [www.bidspotter.com](http://www.bidspotter.com), pending the Auctioneers review of the information provided you will be approved at the Auctioneers discretion.
- **Bidders outside of the United States** must post a deposit of approx. 25% of their planned spending budget or \$2,500.00 minimum with Cincinnati industrial auctioneers in order to be approved to bid. Those who do not post the deposit will not be approved. **period.**



Struers Model Labopol-25 Lapping Machine



40' JLG Model N40 Electric Boom Lift



9,000 Lb. Linde Model RX60-50 Non-Marking Tire Electric Lift Truck



Late Model Office Equipment

# PUBLIC AUCTION

*Plant Closed*  
**GEAR SYSTEMS USA, INC.**

2400 N. Priority Way Street  
 Yorktown, Indiana 47396  
 55 Miles Northeast of Indianapolis, IN

**SALE DATE:**  
**Tuesday, January 21st**  
**STARTING: 9:00 AM**

**INSPECTION:**  
 Monday, January 20th, 10:00 AM to 4:00 PM  
 or by appointment with [joe@cia-auction.com](mailto:joe@cia-auction.com)



**CINCINNATI INDUSTRIAL AUCTIONEERS**

Contact Information  
 2020 Dunlap St.  
 Cincinnati, Ohio 45214  
 Phone 513-241-9701  
 Fax 513-241-6760  
[www.cia-auction.com](http://www.cia-auction.com)



(6) Bridge Cranes to 25 Ton



2012 You Ji VBM



2010 Zeiss GMM

FIRST CLASS MAIL!

PRE-SORT  
 FIRST CLASS  
 U.S. POSTAGE  
**PAID**  
 CINCINNATI, OHIO  
 PERMIT NO. 3593



**Important Mail**

TO BE DIRECTED TO THE ATTENTION  
 OF EXECUTIVE PERSONNEL

**TUESDAY, JANUARY 21ST**

# PUBLIC AUCTION

*Plant Closed*  
**GEAR SYSTEMS USA, INC.**

2400 N. Priority Way Street  
 Yorktown, Indiana 47396  
 55 Miles Northeast of Indianapolis, IN

**IMPORTANT NOTICE:**

Although information has been obtained from sources deemed reliable, the auctioneer makes no warranty or guarantee, expressed or implied, as to the accuracy of the information herein contained. It is for this reason that buyers should avail themselves of the opportunity to make inspection prior to the sale. This brochure is intended to provide general information of the equipment being offered and is subject to errors, omissions, additions or deletions. Please check with the Auctioneer's Office for a final listing. Items offered may or may not necessarily be sold as described and/or photographed in this brochure.

**MAIL BIDS ACCEPTED WITH A 25% DEPOSIT**

**DIRECTIONS**

Approx. 40 Miles Northeast of Indianapolis off I-69. Proceed to Exit 241 for IN-332 Turn East onto IN-332. Turn Right Immediately onto N. Executive Park Rd, Proceed 0.4 Mile to Left Turn onto W. Jackson St. Continue 0.2 Mile to Sale Site on Left. Watch for Auction Parking and Auction Signs.

**AUCTIONEERS**

**Cincinnati Industrial Auctioneers – License No. AC63004471**

**Jeffrey L. Luggen – License No. AU01051612**

**Joseph M. Luggen – License No. AU11200137**



**TERMS OF SALE**

All equipment described herein will be sold "as is", "where is" to the highest bidder or bidders for cash in accordance with our regular terms and conditions of sale. Unless other satisfactory arrangements are made, a **25% deposit** in cash, certified or cashier's check payable to Cincinnati Industrial Auctioneers, Inc., **is required on all purchases.** Firm and personal checks accepted only if accompanied by a letter from your bank guaranteeing your funds. All sales are subject to state and/or local taxes unless a signed exemption form is presented at the time of purchase. **All balances are due at the conclusion of the sale.** No merchandise may be removed while the sale is in progress. **All bidders must comply with our Standard Terms of Sale,** copies of which will be available at the sale site or can be obtained from our website.

**15% ONSITE BUYER'S PREMIUM**  
**18% ONLINE BUYER'S PREMIUM**



Sale Under The Management Of

## CINCINNATI INDUSTRIAL AUCTIONEERS

auctioneers | appraisers | since 1961 | [cia-auction.com](http://cia-auction.com) | [info@cia-auction.com](mailto:info@cia-auction.com)  
 2020 Dunlap St., Cincinnati, Ohio 45214 Phone 513-241-9701 Fax 513-241-6760